

3 JACKSCREW HOLES PROVIDED

Ø 1-7/16  
SHAFT SIZE

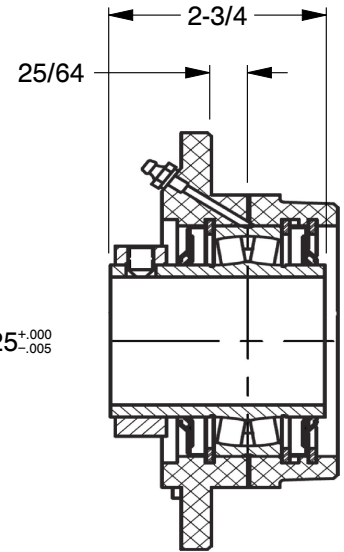
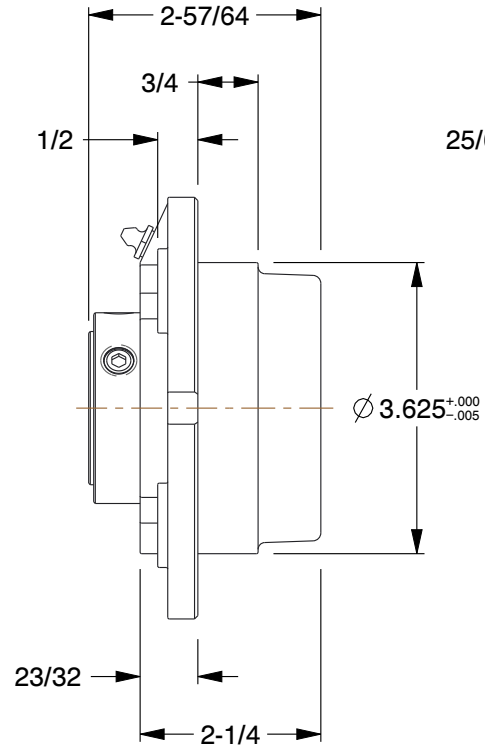
Ø 4-3/8  
(B.C.D.)

3-3/32  
SQR.

4X Ø 3/8  
(BOLT DIA.)

Ø 5-1/4

JONES



NON-EXPANSION

**NOTES:**

1. FULLY SELF-ALIGNING
2. FIXED AND EXPANSION UNITS
3. APPROX. WEIGHT : 6.3 LBS
4. ALL DRAWING DIMENSIONS ARE IN INCH.
5. DIMENSIONS ARE FOR REFERENCE ONLY, SUBJECT TO CHANGE WITHOUT NOTICE.



Jones Bearing Company  
1062A, Hwy 72 East,  
Pelham, AL 35124, USA  
Phone: (205) 663-3002  
Fax: (205) 664-3351  
Email: sales@jonesbearing.com

This drawing is the property of Jones Bearing Company. It contains confidential, proprietary information that is Jones Bearing Company property. Do not disclose to or duplicate for others except as authorized by Jones Bearing Company.

Tolerances (Inch)  
.xx = ± .01  
.xxx = ± .005  
x° = ± 1°  
or As Noted

SCALE 0.42

COMPONENT		BEARINGS	
<b>JYRP2107</b> PILOTED FLANGED BEARINGS JYRP-2000		<b>DATE</b>	
		05/24/19	
		<b>SHEET</b>	
		1 of 1	